

 **KORE** co-working

**SHORT TERM
LEASES
AVAILABLE**

KORE 9250

9250 E COSTILLA AVE, GREENWOOD VILLAGE, CO

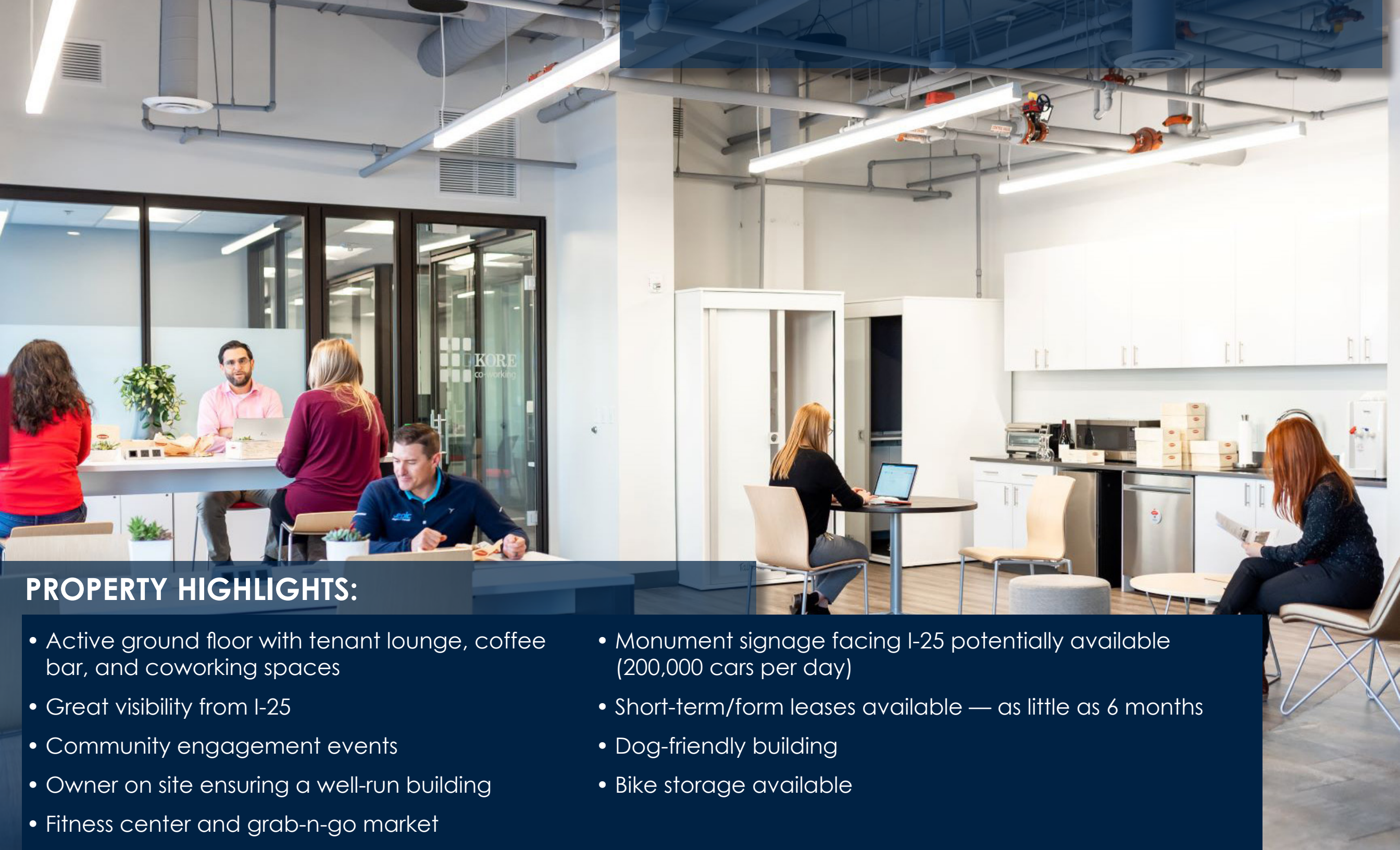
OFFICE OR MEDICAL

For leasing information contact:

Michelle Gertzman | 720.743.6399
mgertzman@premisescommercial.com

Matt Smith | 303.996.8460
msmith@premisescommercial.com


PREMISES
PREMISES COMMERCIAL REAL ESTATE LLC



PROPERTY HIGHLIGHTS:

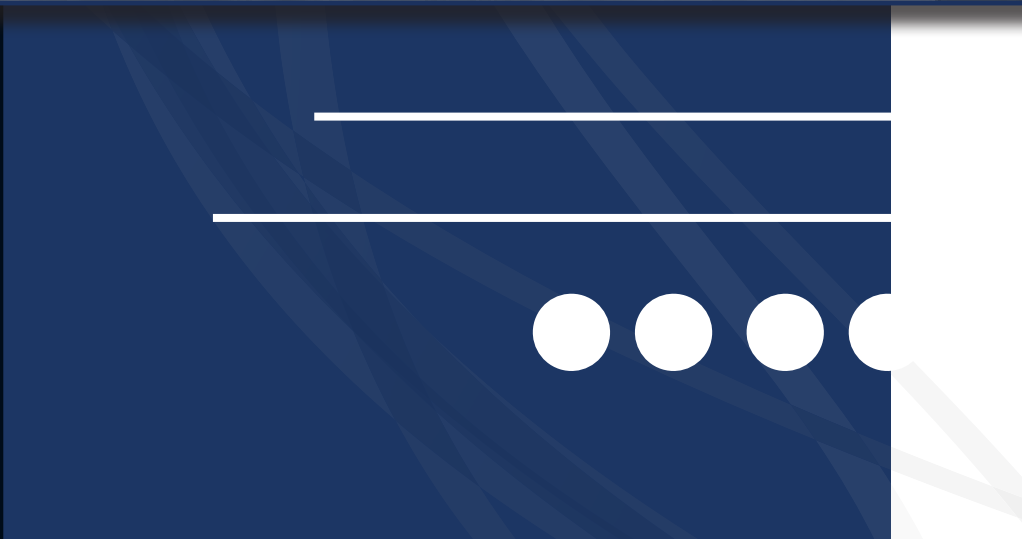
- Active ground floor with tenant lounge, coffee bar, and coworking spaces
- Great visibility from I-25
- Community engagement events
- Owner on site ensuring a well-run building
- Fitness center and grab-n-go market
- Monument signage facing I-25 potentially available (200,000 cars per day)
- Short-term/form leases available — as little as 6 months
- Dog-friendly building
- Bike storage available

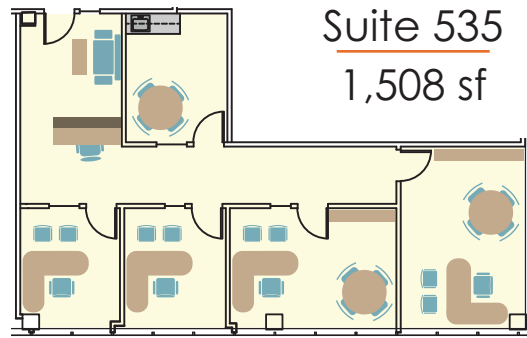


CLOSE TO SHOPPING,
RESTAURANTS & PARKS

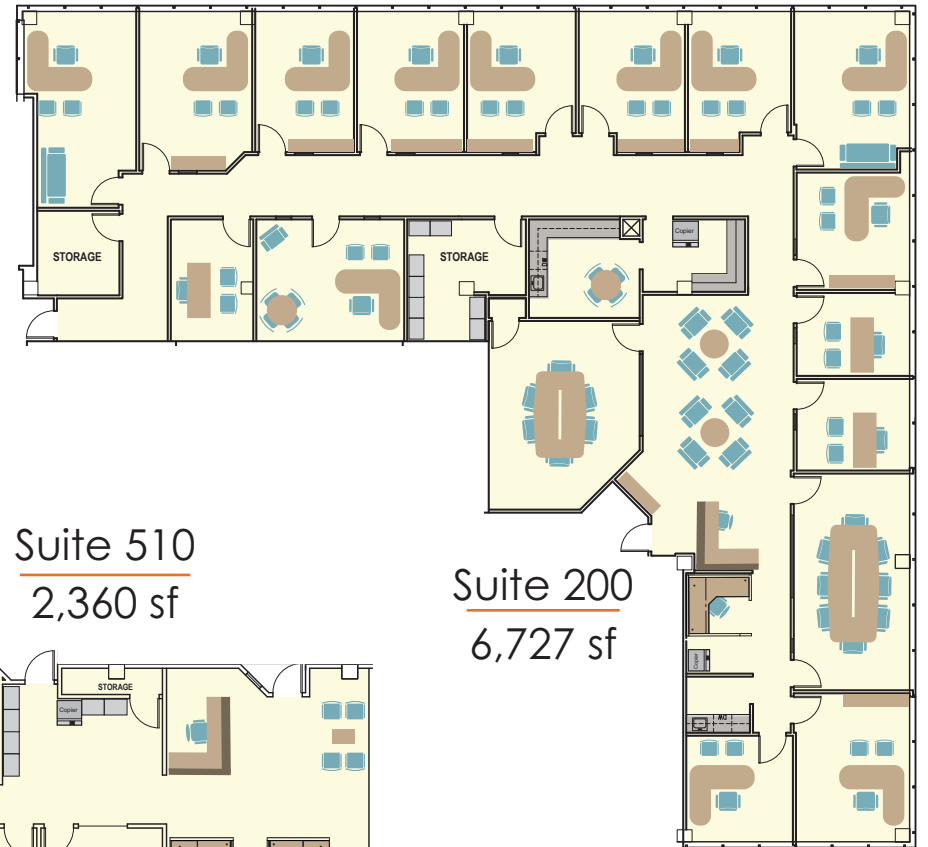
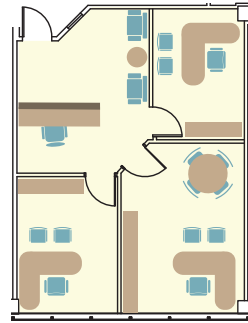
KORE
9250



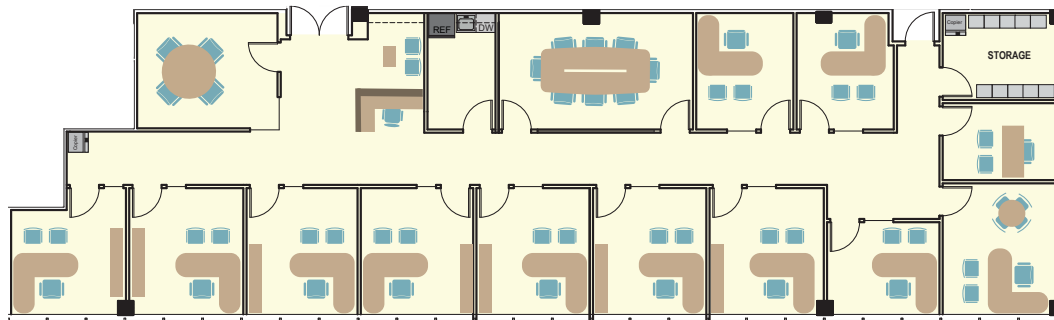




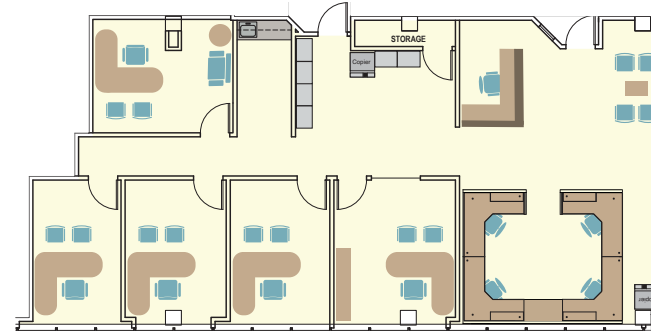
Suite 205
942 sf



Suite 305
4,189 sf



Suite 510
2,360 sf

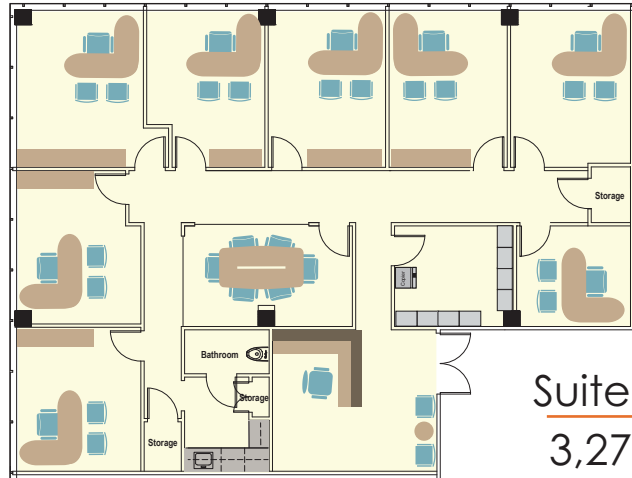
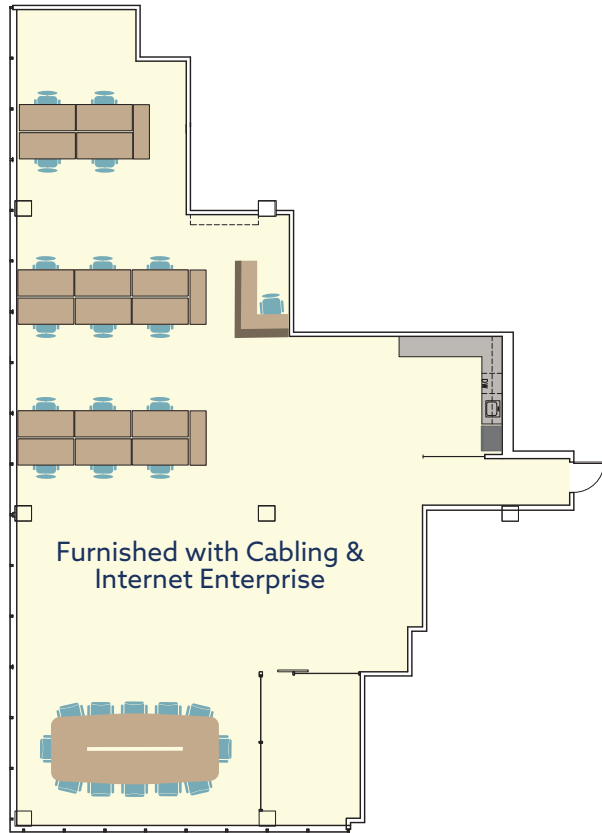


Suite 200
6,727 sf



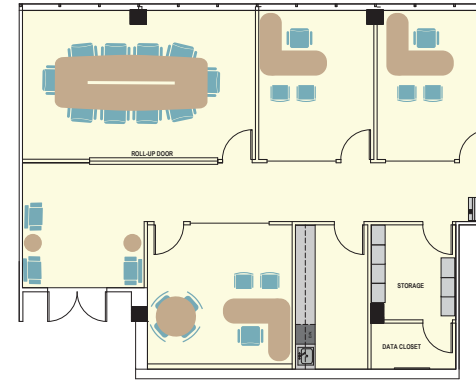
AVAILABLE SUITES

Suite 505
3,330 sf

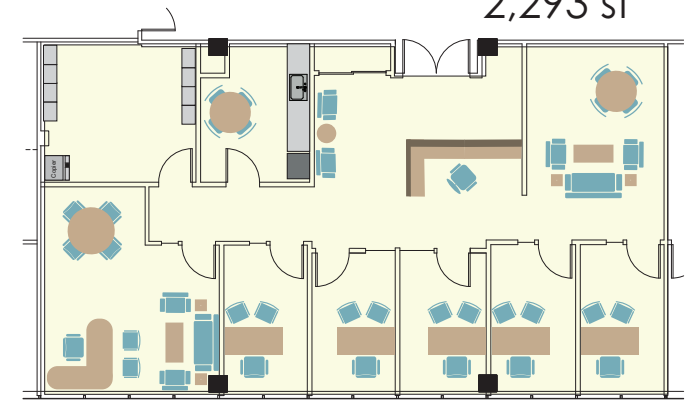


Suite 600
3,276 sf

Suite 620
2,007 sf

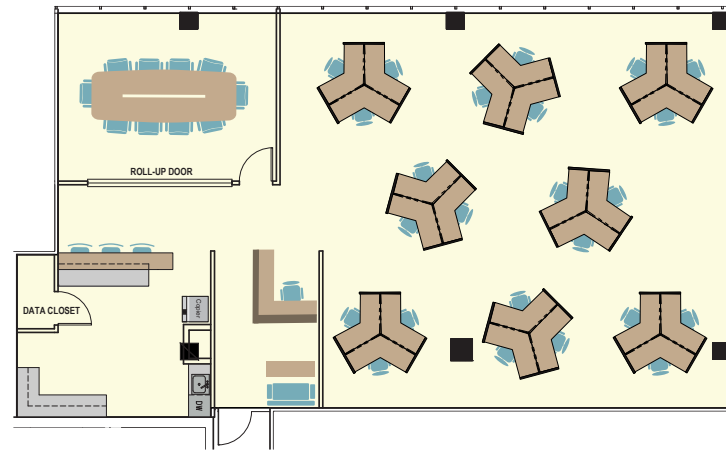


Suite 655
2,293 sf



(Available 2/1/2026)

Suite 650
2,719 sf



For leasing information contact:

Michelle Gertzman | 720.743.6399
mgertzman@premisescommercial.com

Matt Smith | 303.996.8460
msmith@premisescommercial.com

AVAILABLE SUITES