

Crestline Office Center

7400 East Crestline Circle, Greenwood Village, CO 80111

GREAT LOCATION NEXT TO THE LANDMARK



PROPERTY HIGHLIGHTS

- Walk to Landmark Restaurants Next Door
- Elegant 2 Story Granite Lobby
- Quick and easy access to I-25
- Near the Orchard Road Light Rail Station
- 4.2/1,000 SF Parking Ratio with 1/1,000 SF in the Underground Garage.
- Underground Executive Parking and Basement Storage
- Responsive On-site Management in Owner Occupied Building



For leasing information please contact:

Michelle Gertzman | 720.743.6399
mgertzman@premisescommercial.com

Matt Smith | 303.996.8460
msmith@premisescommercial.com

PREMISES
PREMISES COMMERCIAL REAL ESTATE, LLC
WWW.PREMISESCOMMERCIAL.COM

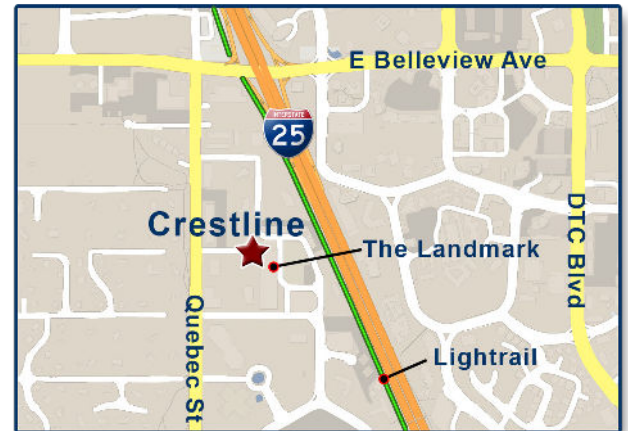
Crestline Office Center

7400 East Crestline Circle, Greenwood Village, CO 80111

FOOD AND ENTERTAINMENT RIGHT NEXT DOOR

LANDMARK AMENITIES

- Jing
- Hapa Sushi
- Lucy
- Pizza Republic
- Ted's Montana
- Slattery's Irish Pub
- Yanni's Greek Tavern
- Big Daddy's Burger Bar
- Monk & Mongoose
- Early Bird
- Landmark Theaters
- Comedy Works
- Purre Bar
- Cycle Bar

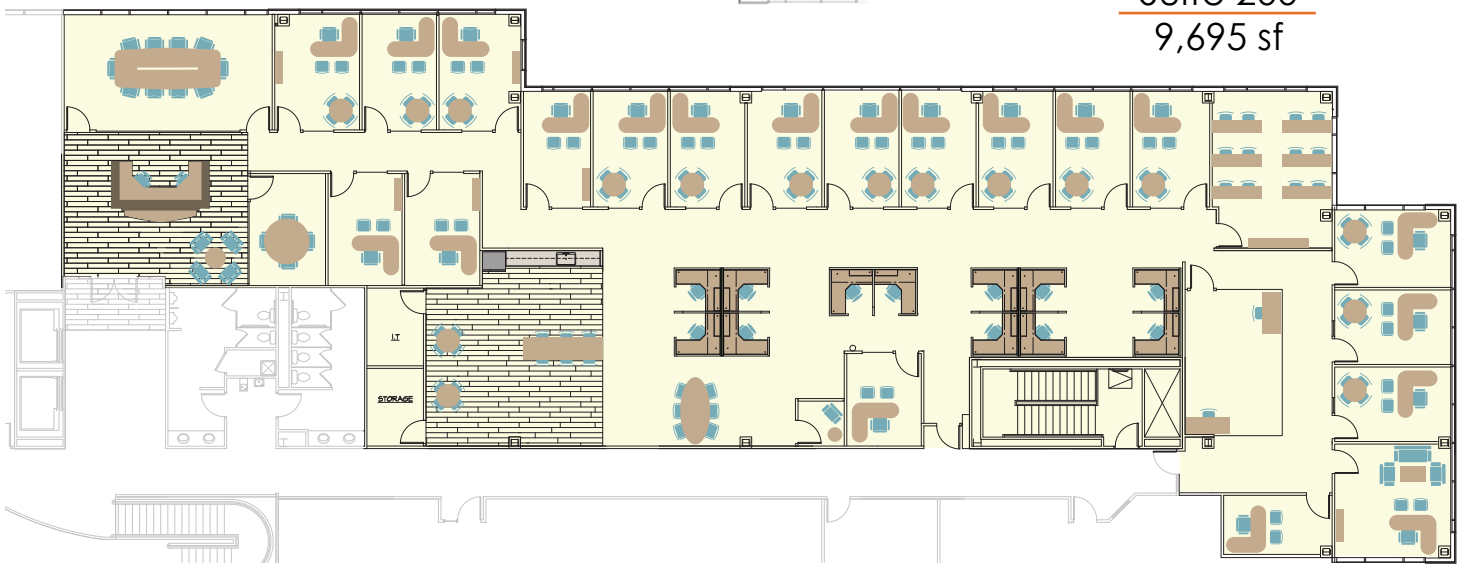


AVAILABLE SUITES

Suite 150
1,930 sf



Suite 200
9,695 sf



WWW.PREMISESCOMMERCIAL.COM

The information contained herein, while not guaranteed, has been secured from sources we believe to be reliable. Different brokerage relationships are available which include Seller/Landlord Agency, Buyer/Tenant Agency and Transaction Broker. Premises Commercial Real Estate, LLC is acting in this capacity as Landlord's/Sublessor's Agent, unless otherwise agreed, and owes its fiduciary allegiance to Landlord/Sublessor as defined by Colorado Real Estate Commission.