

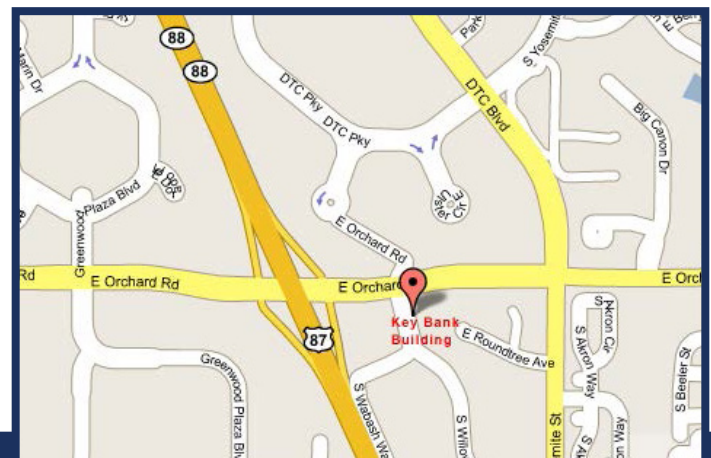
5950 South Willow Drive

Greenwood Village, CO 80111



PROPERTY HIGHLIGHTS

- EASY TO FIND, PROMINENT DTC LOCATION ONE BLOCK EAST OF I-25 ON ORCHARD ACROSS FROM DEL FRISCO'S.
- GREAT MOUNTAIN VIEWS AVAILABLE.
- COMMON CONFERENCE ROOM.
- NEAR THE ARAPAHOE & ORCHARD LIGHT RAIL STATIONS.
- 4.25/1,000 SF PARKING RATIO.
- AWARD WINNING LOCAL OWNERSHIP — KOELBEL AND COMPANY WITH OVER 50 YEARS SUCCESS IN DENVER REAL ESTATE.



For leasing information please contact:

Michelle Gertzman | 720.743.6399
mgertzman@premisescommercial.com

Matt Smith | 303.996.8460
msmith@premisescommercial.com

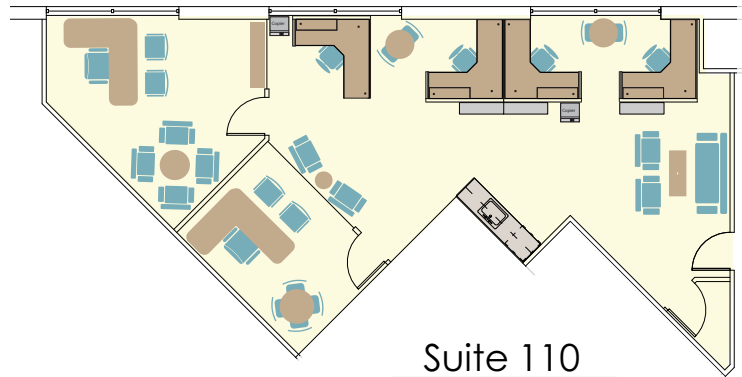
PREMISES
PREMISES COMMERCIAL REAL ESTATE LLC

WWW.PREMISESCOMMERCIAL.COM

5950 South Willow Drive

Greenwood Village, CO 80111

AVAILABLE SUITES



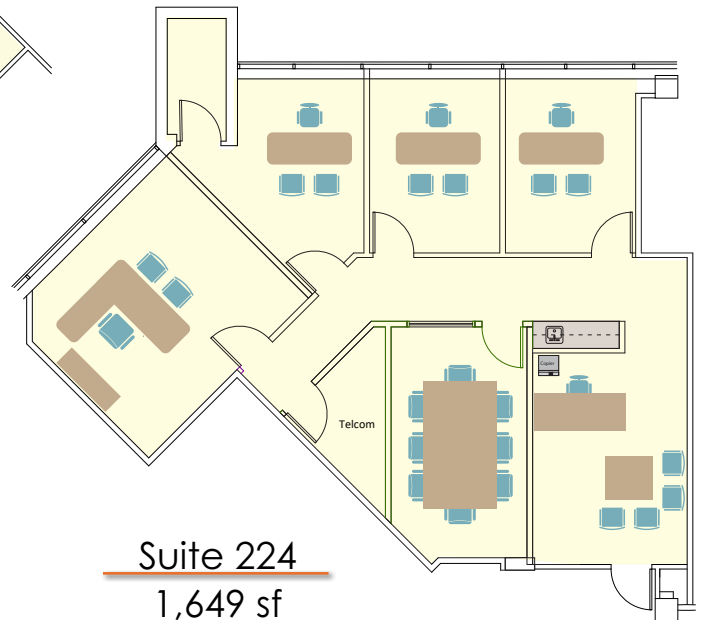
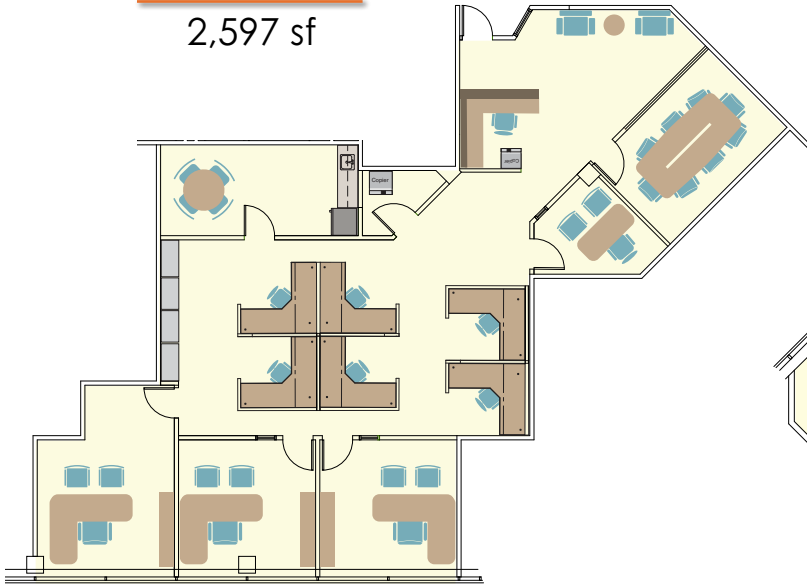
Suite 110

1,255 sf

First Floor

Suite 210

2,597 sf



Suite 224

1,649 sf

Second Floor

WWW.PREMISESCOMMERCIAL.COM

The information contained herein, while not guaranteed, has been secured from sources we believe to be reliable. Different brokerage relationships are available which include Seller/Landlord Agency, Buyer/Tenant Agency and Transaction Broker. Premises Commercial Real Estate, LLC is acting in this capacity as Landlord's/Sublessor's Agent, unless otherwise agreed, and owes its fiduciary allegiance to Landlord/Sublessor as defined by Colorado Real Estate Commission.